



A GUIDE TO MEDALLIONS & COINS

P 02 6123 2950

F 02 6280 9966

E sales@militaryshop.com.au

W militaryshop.com.au

Post PO Box 166, Fyshwick ACT 2609

Showroom 65 Kembla Street, Fyshwick ACT



EXPERIENCE YOU CAN TRUST

Medallions, or coins as they are often referred to, are a great way to share pride in your brand. Whether it's for gifting; for an event; or part of a commemoration, you can trust Australia's leading medallion creator. For more than 30 years we've provided quality medallions for Governor Generals, the Chiefs of our military and the Australian Parliament, as well as thousands of military establishments, sporting clubs and government and law enforcement agencies. It's what we do and we do it with pride.

MANUFACTURING METHODS

Every medallion we create is to an exacting standard using either die-cast zinc alloy or die-struck brass. Each has advantages depending on the medallion design.

Die-cast can produce amazing '3D depth' and a crisp finish, while die-struck is much the same process used to mint money and is the process used to create weightier 'Proof' medallions.

Both processes deliver a quality look, feel and durability. The raw base-medallions are plated, polished and treated with your choice of a range of finishes.

Our medallion experts are able to work with you to select the appropriate method so that you achieve the best medallion within your budget.

COIN CREATION PROCESS

QUOTE

Your quote includes setup fees and unit price breakdowns. We try to absorb market fluctuations in raw materials and dollar exchange rates but prices may vary. Once we provide your official quote the price is locked in. Delivery is an extra but charged only at cost.

ARTWORK

Once you have accepted the quote our experienced design team will work with you to create detailed B&W artwork and a digital mock-up so you can see what your medallion will look like. When you're satisfied with the design you simply return the signed artwork approval and we will get your medallion underway.

PRODUCTION

Production and delivery time is about 4 weeks from receipt of your signed approval.

SETUP FEES

When creating a new design a once-off setup fee is charged to cover creation of manufacturing dies. Subsequent re-orders of your medallion will not incur this fee.

PRICING

Prices shown are for 48mm diameter coins with enamel fill.

| PRICES PER UNIT (inc GST) | | | | | SETUP FEES | | |
|--|---------|--------|--------|--------|---------------------------|----------|----------|
| | 50 | 100 | 250 | 500 | | ZINC | BRASS |
| SINGLE SIDED ZINC | \$7.17 | \$5.72 | \$4.47 | \$3.64 | Single Sided 2D | \$99.00 | \$88.00 |
| DOUBLE SIDED ZINC | \$8.46 | \$6.84 | \$5.40 | \$4.42 | Single Sided 3D | \$148.50 | \$132.00 |
| SINGLE SIDED BRASS | \$9.96 | \$8.14 | \$6.47 | \$5.30 | Double Sided 2D | \$165.00 | \$165.00 |
| DOUBLE SIDED BRASS | \$10.96 | \$9.01 | \$7.19 | \$5.88 | Double Sided 3D/2D | \$236.50 | \$220.00 |
| DIAMOND CUT EDGE (Add) | \$2.63 | \$2.28 | \$1.89 | \$1.59 | Double Sided 3D | \$247.50 | \$247.50 |
| ENGRAVED NUMBERING (Up to 7 digits) | \$2.85 | \$2.85 | \$2.85 | \$2.85 | | | |



2D ENGRAVING



3D ENGRAVING

WHY CHOOSE 2D OR 3D ENGRAVING

Every medallion design is different. Where one may suit the added depth of 3D, others will stand out more effectively in 2D. Our team will help you select the best option for your medallion.

2D DIE

'2D' medallions are not flat. Rather they have two levels – the base and a raised design/text. The separation allows for colourisation of lower areas and polishing of higher points. Generally 2D designs can be either die struck or die cast.

3D DIE

'3D' allows for greater dimensional detail (layers) in the medallion design, such as replicating a hat badge or face. It is not suitable or necessary for all designs and the full effect is usually achieved best when die cast.



GOLD

SILVER

BRASS

NICKEL

COPPER

PLATING

All medallions are electroplated in your choice of gold, silver, brass, copper or nickel. After plating in your selected metal the medallion is ready for a range of additional finishes.



GOLD



NICKEL
COPPER
SILVER
BRASS

SOFT ENAMEL

Adding colour to your medallion can make your design stand out even more. The coloured enamel is hand-applied to recessed areas and the durable finish is cured and given a protective epoxy bubble. Soft enamel can be used in conjunction with most other finishes.



COPPER



NICKEL
BRASS
SILVER

ANTIQUÉ FINISH

To achieve an aged look the plated medallion is submerged in an oxidising solution which causes the surface of the coin to darken. The coins are then washed and dried before being given a light polish to remove the dark surface on the raised areas parts of the medallion. The antique finish can be applied to silver, brass, copper, and nickel plated coins and is great for bringing out the details in 3D engravings.



BRASS



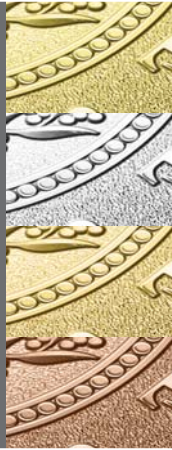
NICKEL
COPPER
SILVER

ANTIQUÉ FINISH WITH SOFT ENAMEL

The combination of the two processes provides a stunning finish. After the medallion is oxidised and polished the soft enamel is applied to the selected areas.



SILVER



BRASS
NICKEL
GOLD
COPPER

SAND-BLASTED BACKGROUND

To achieve a subtle contrast in the metal finish the medallion's background is finely sand-blasted to achieve a frosted effect. The raised surfaces are highly polished and the result is dignified contrast and quality medallion.



TWO-TONE

TWO-TONE PLATING

The combination of gold and silver achieves a rich finish. After the medallion in silver plated a masking agent is applied to the surfaces of the coins that are to remain silver. The coins are then plated with gold which only bonds to the exposed surfaces. Two-tone plating can be used in combination with soft enamel and sandblasting.



A



B
C
D
E
F
G
H

DIAMOND CUT EDGE

Diamond cut edges are one of the most effective ways to give your medallion a special 'feel'. A diamond wheel cuts one of several patterns into the medallion's rim.

- A: Oblique Line
- B: Scale Edge
- C: Rope Line
- D: Petal Edge
- E: Grid Edge
- F: Flat Wave
- G: Diagonal Edge
- H: Curve Wave



SANS-SERIF

SERIF

FONT

We offer two standard font types, serif and sans-serif.

SANS-SERIF

Sans serif fonts are crisp and clean and can be ideal when creating a medallion with a contemporary or modern look.

ROYAL AUSTRALIAN AIR FORCE

SERIF

Serif fonts are more traditional and can be the best choice when creating a medallion with a classical look.

ROYAL AUSTRALIAN AIR FORCE



RAISED

RECESSED

TEXT STYLE

RAISED

Raised text is run within two raised rings around the perimeter of the coin. The background behind the wording can then be finished in any of the available finishes.

RECESSED

Recessed text is used in conjunction with a wide outer rim. The wording is etched into the rim and can be filled with soft enamel in your choice of colour.

PACKAGING AND PRESENTATION

All presentation and display options can be customised with insignia or messaging. Talk to us about design and costs.



PVC ENVELOPE

PVC ENVELOPE

Clear PVC envelope to protect the medallion in transit or storage.

| 1 | 10 | 25 | 50 | 100 | 250 | 500 | 1000 |
|----------|-----------|-----------|-----------|------------|------------|------------|-------------|
| \$1.10 | \$0.99 | \$0.83 | \$0.71 | \$0.50 | \$0.35 | \$0.34 | \$0.31 |



VELVET POUCH

VELVET POUCH

Add a touch of class with this sewn black velvet pouch with top drawstring.

| 1 | 10 | 25 | 50 | 100 | 250 | 500 | 1000 |
|----------|-----------|-----------|-----------|------------|------------|------------|-------------|
| \$1.90 | \$1.80 | \$1.70 | \$1.50 | \$1.45 | \$1.30 | \$1.18 | \$1.12 |



PRESENTATION WALLET

PRESENTATION WALLET

These soft vinyl wallets with flocked interior and medallion recess are a cost effective presentation option.

| 1 | 10 | 25 | 50 | 100 | 250 | 500 | 1000 |
|----------|-----------|-----------|-----------|------------|------------|------------|-------------|
| \$3.00 | \$2.85 | \$2.70 | \$2.40 | \$2.35 | \$2.10 | \$2.00 | \$1.89 |



PRESENTATION BOX

PRESENTATION BOX

Add to the perceived value of any medallion presentation with these black leatherette presentation and gifting boxes with spring close lids. The moulded interior is flock finished.

| 1 | 10 | 25 | 50 | 100 | 250 | 500 | 1000 |
|----------|-----------|-----------|-----------|------------|------------|------------|-------------|
| \$6.10 | \$5.80 | \$5.50 | \$4.90 | \$4.65 | \$4.25 | \$3.98 | \$3.72 |

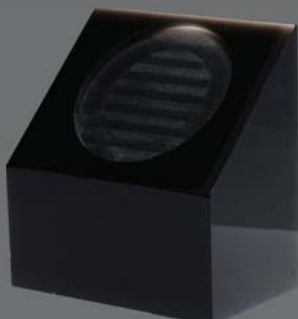


MEDALLION STAND

MEDALLION STAND

This elegant black acrylic stand is comes in a form-cut gift box to accommodate the medallion and display stand in a set. The stand front face is designed to accommodate an engraving plate (not supplied) if required.

| 1 | 10 | 25 | 50 | 100 | 250 | 500 | 1000 |
|----------|-----------|-----------|-----------|------------|------------|------------|-------------|
| \$22.95 | \$21.95 | \$20.95 | \$18.95 | \$17.95 | \$16.95 | \$15.95 | \$14.95 |



MEDALLION BLOCK

MEDALLION BLOCK

This rich black acrylic plinth is an outstanding display option. The solid block's face is ideal for affixing a message plate (not included). It comes in a form-cut gifting box with display and coin.

| 1 | 10 | 25 | 50 | 100 | 250 | 500 | 1000 |
|----------|-----------|-----------|-----------|------------|------------|------------|-------------|
| \$13.95 | \$13.50 | \$12.95 | \$11.50 | \$10.95 | \$10.50 | \$9.95 | \$9.25 |

CONTACT DETAILS

Organisation Name: _____

Contact Name: _____

Delivery Address: _____

State: _____ Postcode: _____

Phone Number: _____ Fax Number: _____

Email Address: _____

ENGAVING STYLE

2d Engraving 3d Engraving

PLATING

Gold Silver Brass Copper Nickel

FINISH

Soft Enamel Antique Sand-blasted Two-tone

DIAMOND CUT EDGE

Oblique Line Scale Edge Rope Line Petal Edge Grid Edge Flat Wave Diagonal Edge Curve Wave

PACKAGING

PVC Envelope Velvet Pouch Presentation Wallet Presentation Box Coin Stand Coin Block

QUANTITY

P 02 6123 2950
F 02 6280 9966
E sales@militaryshop.com.au
W militaryshop.com.au
Post PO Box 166, Fyshwick ACT 2609
Showroom 65 Kembla Street, Fyshwick ACT

